

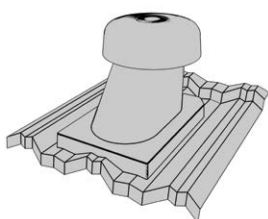
## SANITARY VENT HV110



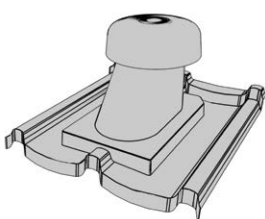
### Specifications

Weight: 1.25 kg  
 Made of HIPS (High Impact Polystyrene)  
 Colours: see colour chart  
 Connection pipe 110 mm

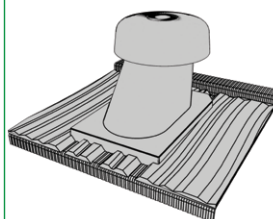
**Available for: BOND, CLASSIC, TUDOR, SHAKE, ROMAN**



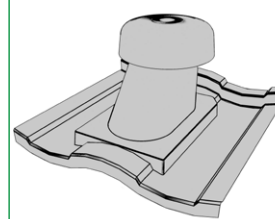
**CLASSIC**



**TUDOR**



**SHAKE**



**ROMAN**